

# Service Bulletin

## Replacing Rubber Deck Cushions

Applies to: All Startrac Treadmills



Following the proper installation of rubber deck cushions is important to the life of the cushions. Follow the steps below to install new rubber deck cushions.

### Tools Required

- Epoxy Adhesive (PN: [140-3115-KT](#))
- Cutting Tool
- 180 Grit Sandpaper
- Rubber Cushion (PN: [010-3156](#) each)
- Towel
- Putty Knife (or scraping tool)

### Replacement procedure

1. Remove the deck, rollers, and running belt to gain access to the rubber deck cushion.
2. Carefully using the cutting tool, start the incision at the lowest point of the deck rubber while pulling the top portion with the other hand (Fig. 1). In some cases, the deck rubber may already be loose.



Fig. 1

## Service Bulletin

3. After the cushion has been removed, there may be some rubber and adhesive remnants from the previous deck cushion. At this point, use a putty knife (or scraping tool) to scrape off the remnants (Fig. 2).



Fig. 2

4. After removing all the remaining deck rubber and adhesive, use 180 grit sandpaper to remove the remaining remnants and roughen up the frame surface (Fig 3).



Fig. 3

# Service Bulletin

5. After sanding, use a towel with rubbing alcohol and wipe the frame to clear any debris (Fig. 4). Use the towel and alcohol to wipe down the surface of the deck rubber that will make contact with the frame (Fig. 5).



Fig. 4



Fig. 5

6. Apply the epoxy adhesive on the frame in a zigzag motion (Fig. 6) across the entire frame. The rubber deck cushion must be installed within 5 – 40 seconds\* once the adhesive has been applied to the frame.



Fig. 6

*\*Relative to humidity and temperature of the room.*

## Service Bulletin

7. Lay the cushion on the frame with the larger side on the bottom (Fig. 7). Align it and press down firmly on various areas of the deck cushion for 30 seconds (Fig. 8).

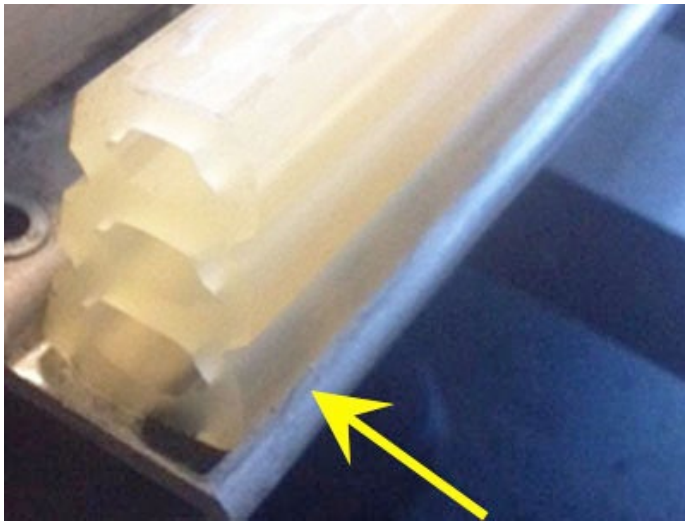


Fig. 7



Fig. 8

8. For best results, allow at least 15 minutes for the adhesive to cure before putting the deck back on the frame.
9. Reinstall the deck onto the frame.  
Tip: Use a wet towel to moisten the top of the rubber deck cushion before installing the deck. This stops the deck from sticking to the deck cushion when being installed.